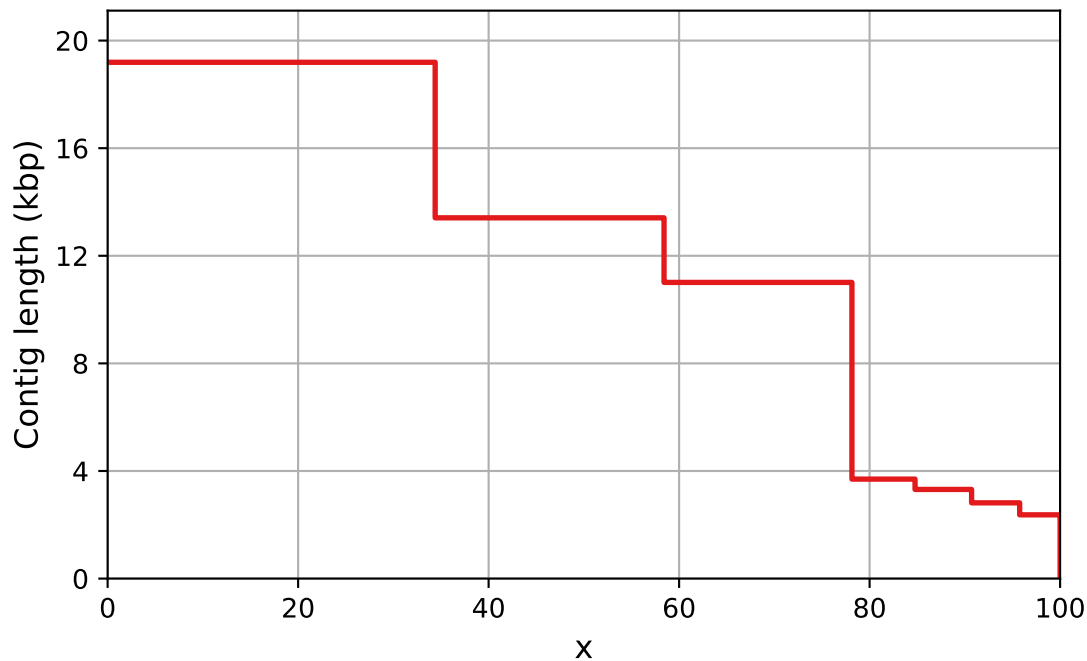


Report

	genome.nextpolish
# contigs (>= 0 bp)	7
# contigs (>= 1000 bp)	7
# contigs (>= 5000 bp)	3
# contigs (>= 10000 bp)	3
# contigs (>= 25000 bp)	0
# contigs (>= 50000 bp)	0
Total length (>= 0 bp)	55812
Total length (>= 1000 bp)	55812
Total length (>= 5000 bp)	43614
Total length (>= 10000 bp)	43614
Total length (>= 25000 bp)	0
Total length (>= 50000 bp)	0
# contigs	7
Largest contig	19193
Total length	55812
GC (%)	38.20
N50	13411
N90	3314
auN	12679.2
L50	2
L90	5
# N's per 100 kbp	0.00
Complete BUSCO (%)	0.00
Partial BUSCO (%)	0.00
# predicted rRNA genes	0 + 0 part

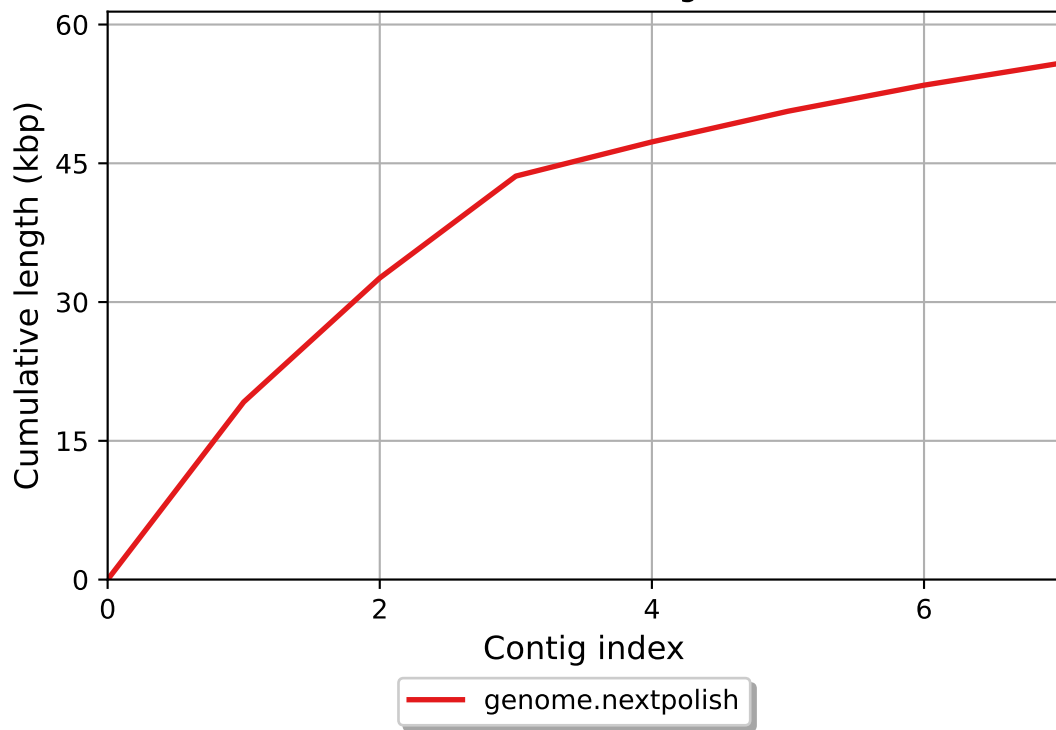
All statistics are based on contigs of size >= 500 bp, unless otherwise noted (e.g., "# contigs (>= 0 bp)" and "Total length (>= 0 bp)" include all contigs).

Nx

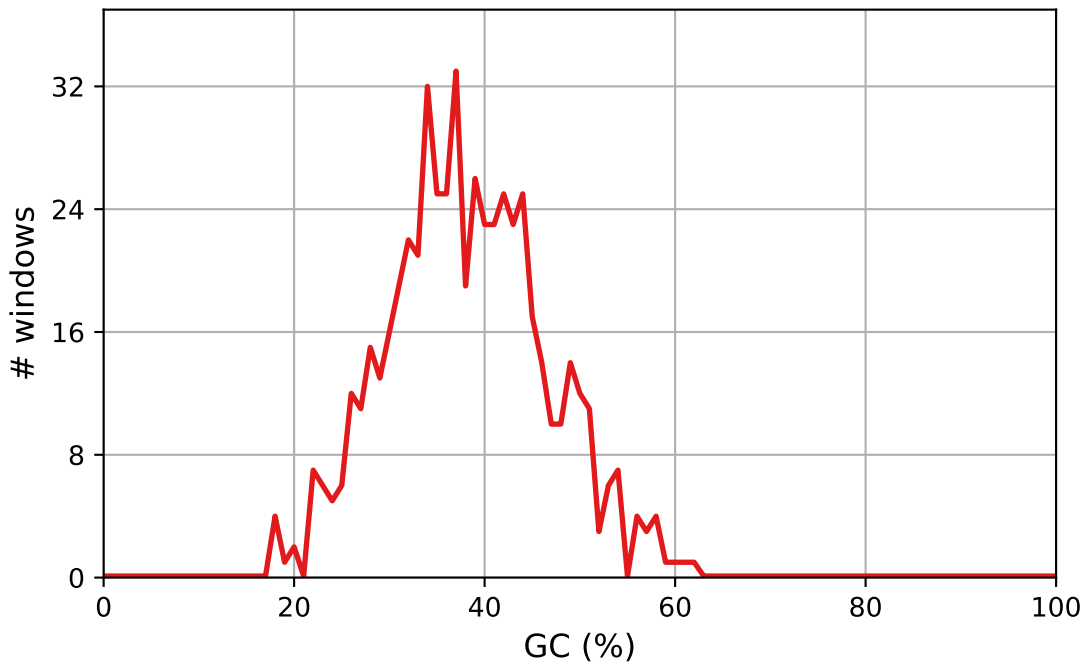


— genome.nextpolish

Cumulative length



GC content



— genome.nextpolish

genome.nextpolish GC content

