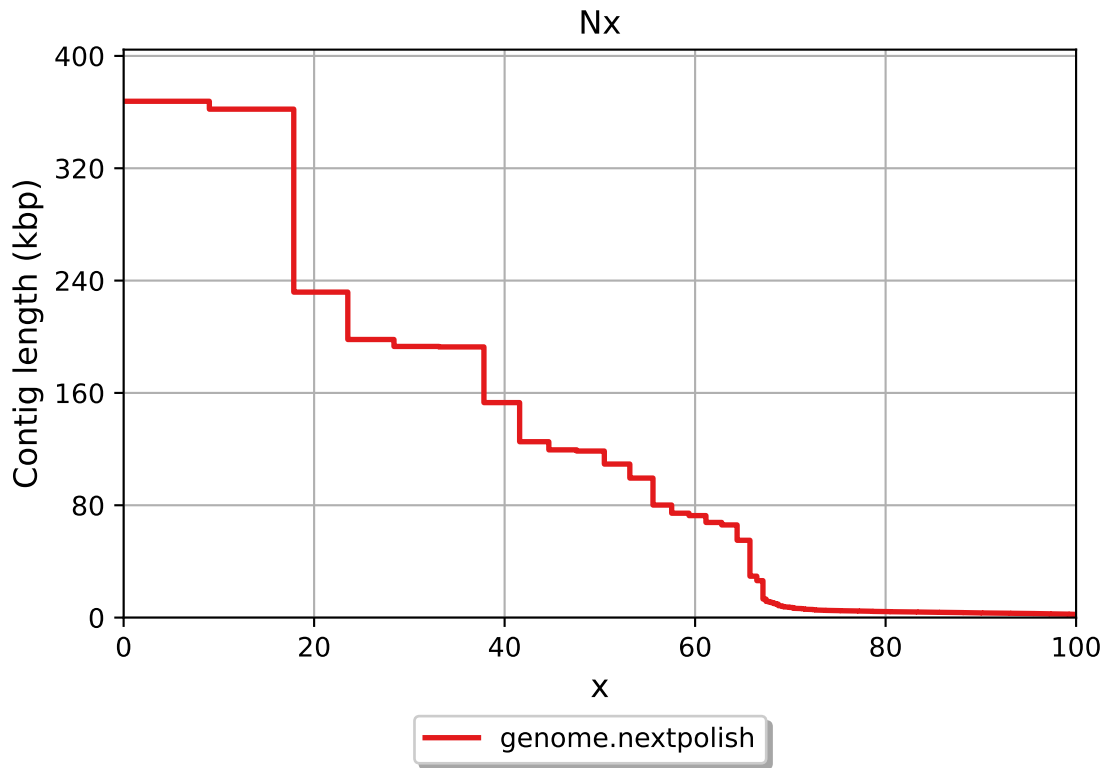
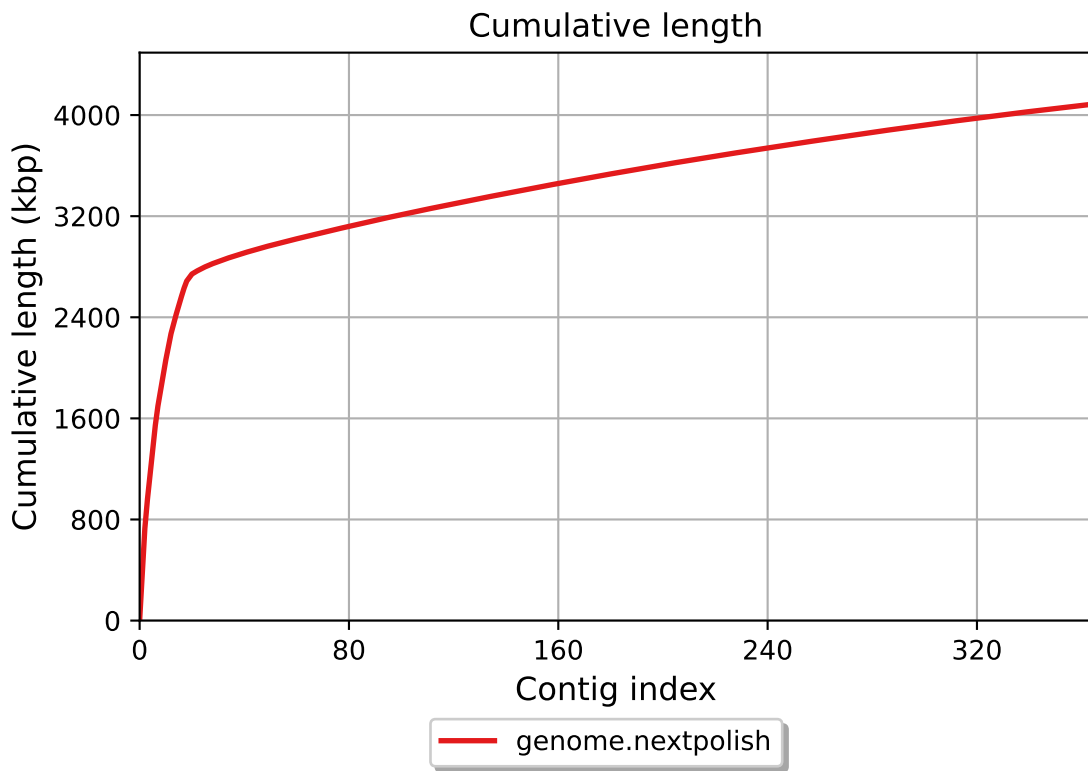


Report

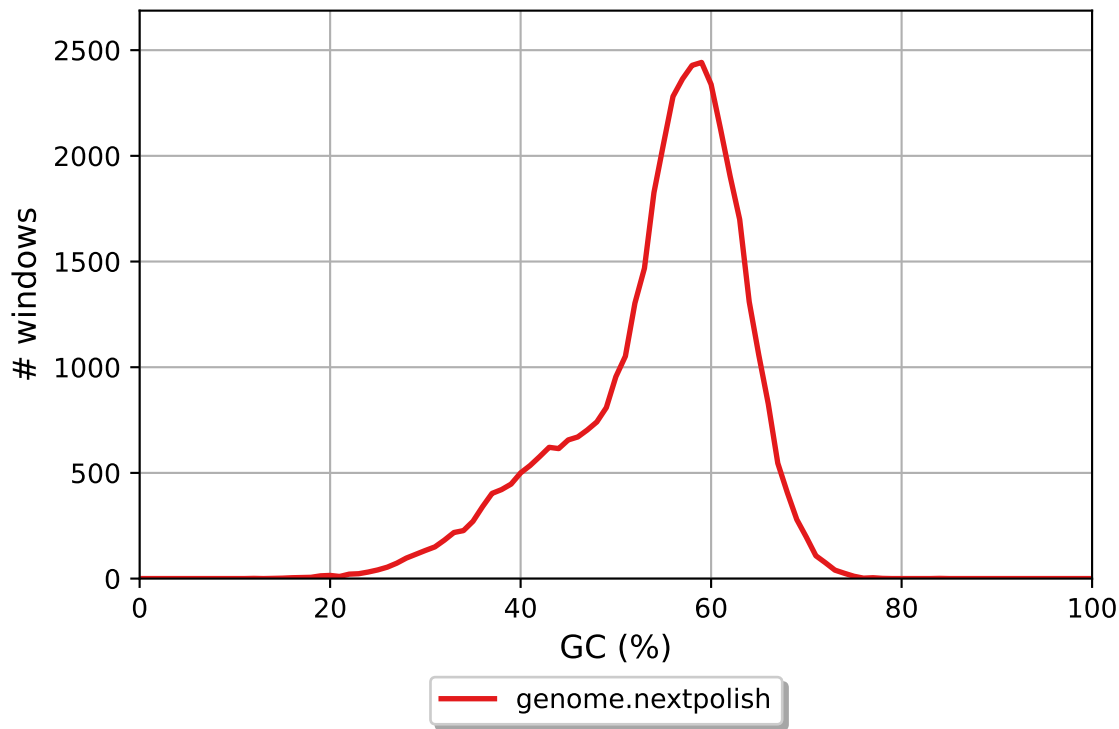
	genome.nextpolish
# contigs (>= 0 bp)	364
# contigs (>= 1000 bp)	364
# contigs (>= 5000 bp)	68
# contigs (>= 10000 bp)	24
# contigs (>= 25000 bp)	20
# contigs (>= 50000 bp)	18
Total length (>= 0 bp)	4085413
Total length (>= 1000 bp)	4085413
Total length (>= 5000 bp)	3061002
Total length (>= 10000 bp)	2788691
Total length (>= 25000 bp)	2742250
Total length (>= 50000 bp)	2686459
# contigs	364
Largest contig	367703
Total length	4085413
GC (%)	54.48
N50	118602
N90	3311
auN	137008.5
L50	10
L90	221
# N's per 100 kbp	0.00
Complete BUSCO (%)	0.00
Partial BUSCO (%)	0.00
# predicted rRNA genes	17 + 3 part

All statistics are based on contigs of size >= 500 bp, unless otherwise noted (e.g., "# contigs (>= 0 bp)" and "Total length (>= 0 bp)" include all contigs).





GC content



genome.nextpolish GC content

